

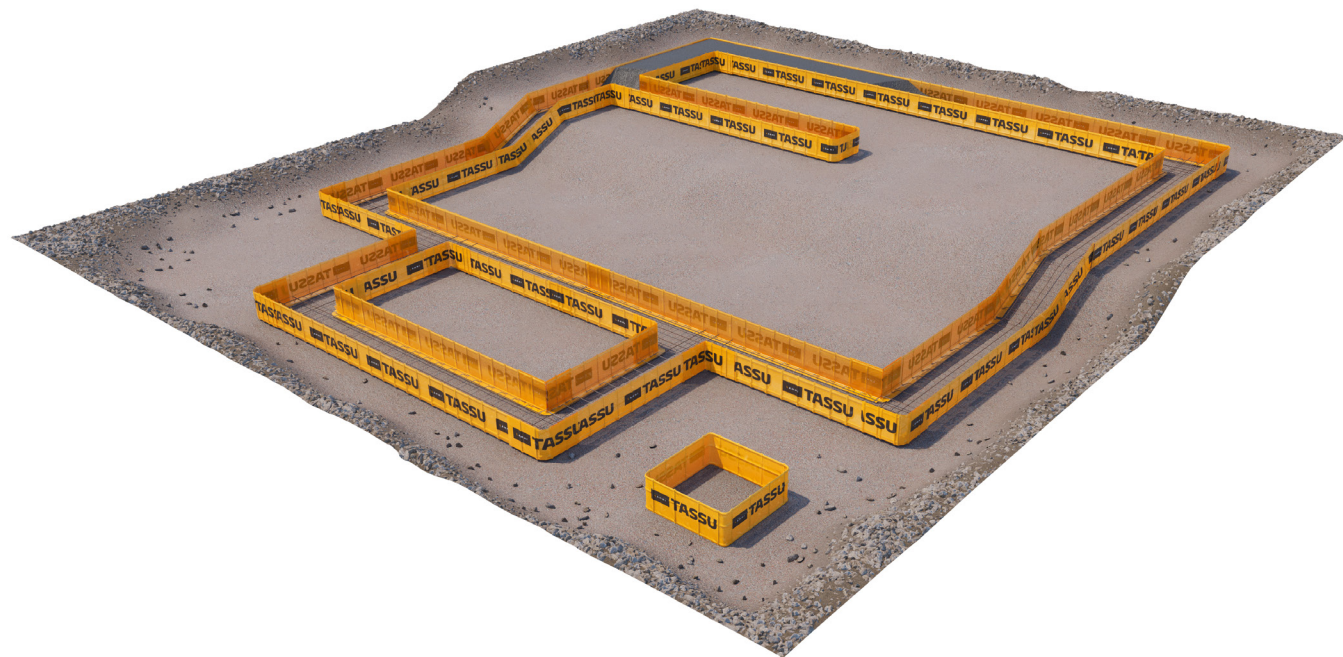


TASSU

The most convenient way to
make a foundation.

LAMMI

tassu



Lammi Tassu ready-made foundation mold is a quick, easy and cost-effective solution for creating a strong and functional building foundation. The mold has ready-made basic reinforcement, is 5 metres in length and weighs only 20 kg. This means that you can make and cast the foundation of a building in one day.

Quick and easy

The ready-made Tassu mold is easy to process, and no special expertise is needed for installation. The molds with basic reinforcement are light to move. If necessary, you can easily install additional reinforcement into the mold, and the casting can be done on the same day. There is no need to dismantle the cast mold.

No demolition waste

The foundation mold, manufactured from steel wire fabric laminated with PE plastic film, is suitable for year-round construction. Thanks to quick installation and ready-made basic reinforcement, you can easily estimate the costs and achieve major savings. You can also generate considerable savings because no demolition waste is created when using Tassu.

Basic equipment is enough

No special tools are needed for installation.

In addition to power scissors suitable for cutting molds, you only need binding wire and a binding hook for connecting the molds.

Clear instructions

The molds are delivered with detailed and clear work instructions that go through the process of making various joints and end pieces. The work instructions are suitable for professional as well as DIY builders.

Normal casting

When the molds are in place, additional reinforcement, is installed into them, if necessary. After this, the casting of the molds is permolded by concrete pumping. The building of the plinth can be started as soon as the concrete is dry.



Ready-made molds are installed on a levelled and firm ground.



After installing any additional reinforcements, the ready-made mold is cast with concrete and the upper surface is levelled at the correct height.

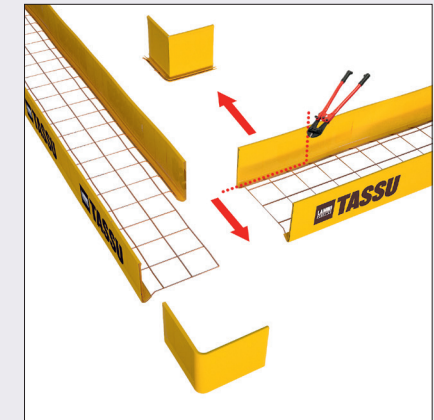


Once the concrete is dry, there is no need to dismantle the mold. This way the plot remains free of construction waste.

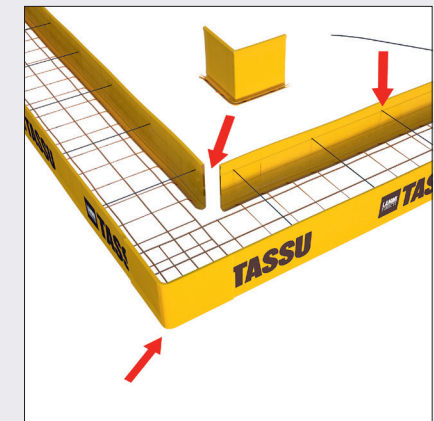


With the ready-made mold, it is also possible to prepare and cast a complex building's mold in one day.

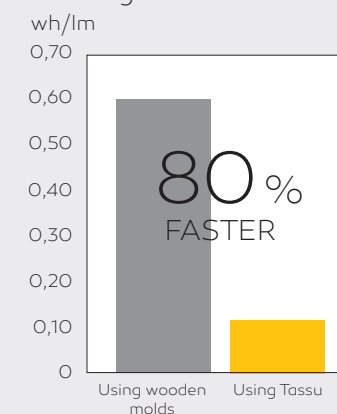
Once the mold lines have been measured and marked, you can begin the installation by cutting the mold and connecting the pieces.



The corner and end pieces as well as any box-shaped molds are created from the cut side of the mold.



Working hours used



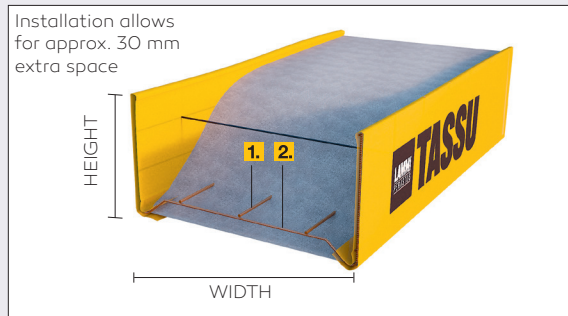
When using wooden molds, the working time used for making the foundation is 0.6 wh/lm.

When using Tassu, the working time needed for making the foundation is 0.12 wh/lm.

wh/lm = necessary worker-hours per one linear metre of foundation.

The working hours used are average working hours measured at a detached house construction site.

Structure of the mold



The mold wall consists of thin steel fabric laminated with PE plastic film.

Basic reinforcement (longitudinal) **1.**

Basic reinforcement (diagonal) **2.**

The prototype mold is made of B-500K fabric and is SFS-marked.

The mold is approximately 30 mm higher than the theoretical height. This is why the mold installation allows for slight unevenness in the base.

Basic reinforcement

Type	Lenght	Width	Height	1.	2.
LT24	5000	400	200	3xØ8mm T6K200	
LT25	5000	500	200	3xØ8mm T6K200	
LT26	5000	600	200	3xØ8mm T6K200	
LT34	5000	400	300	3xØ8mm T6K200	
LT36	5000	600	300	3xØ8mm T6K200	
LT37	5000	700	300	3xØ8mm T6K200	
LT38	5000	800	300	3xØ8mm T6K200	
LT39	5000	900	300	3xØ8mm T6K200	
LT310	5000	1000	300	3xØ8mm T6K200	
LT45	5000	500	400	3xØ8mm T6K200	
LT46	5000	600	400	3xØ8mm T6K200	
LT47	5000	700	400	3xØ8mm T6K200	
LT48	5000	800	400	3xØ8mm T6K200	
LT49	5000	900	400	3xØ8mm T6K200	
LT410	5000	1000	400	3xØ8mm T6K200	
LT56	5000	600	500	3xØ8mm T6K200	
LT58	5000	800	500	3xØ8mm T6K200	

Pillar foundation mold

Type	Lenght	Width	Height		
P34	400	400	300	-	-
P36	600	600	300	-	-
P37	700	700	300	-	-
P38	800	800	300	-	-
P39	900	900	300	-	-
P310	1000	1000	300	-	-
P58	800	800	500	-	-



Solid quality from Lammi.

Lammin Betoni Ltd, 64 years old family owned company, is the oldest and largest company focused on the production of concrete building stones in Finland.

Lammi is an innovative product developer and it's known for its uncompromising quality - a leader in the industry for decades.

Lammi has wide and diverse product range: concrete blocks, stone house-packages, basement and foundation solutions as well as foundation molds for both construction professionals and DIY builders.

Lammin Betoni Ltd is an internationalizing group that continuously develops its operations taking into account customer needs, changing regulations and the environment.



Lammin Betoni Ltd

Ismo Nieminen, CEO

Paarmamäentie 8, 16900 Lammi, Finland

+358 207 530 412

ismo.nieminen@lammi.fi

Marcin Radola

Sales, Central Europe

Lammi-Fundament Sp. z o.o.

ul. Wysoki brzeg 23,

43-603 Jaworzno, Poland

+48 533 299 665

marcin.radola@lammifundament.pl